

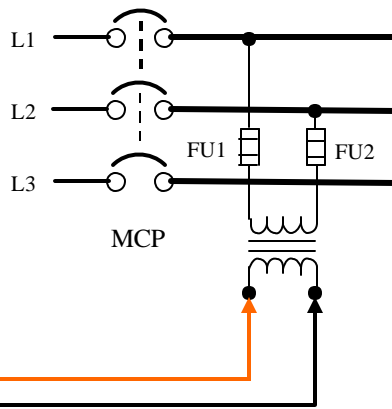
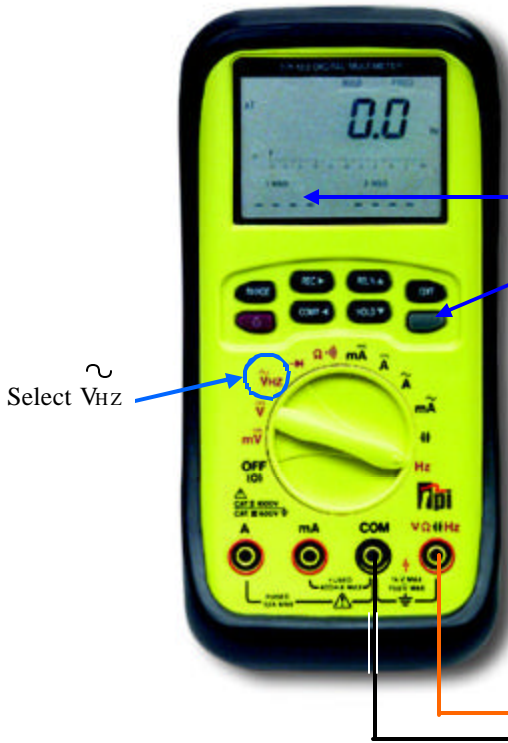
TPI 183 Multimeter

Simultaneous AC Frequency Measurements

The TPI 183 triple-line display permits simultaneous AC Frequency Measurements while making AC Volts Measurements.

Note: See separate Instrument Application Note for making frequency measurement to 200 kHz using the Hz Selector Switch Position.

- Connect meter for AC Voltage Measurement as shown.
- Press unmarked gray button and read frequency on third display.



Measuring AC Volts

CAUTION! Do not attempt to make a voltage measurement if a test lead is plugged in the A or μ mA input jack. Instrument damage and/or personal injury may result.

Note: Voltage is always measured across two circuit points (in parallel with circuit element under test). On the voltage range with leads plugged-in to the meter as shown the meter has a very high input impedance and draws almost no current from the circuit under test.

WARNING! Do not attempt to make a voltage measurements of more than 750 VAC or of a voltage level that is unknown.

CAUTION! Always check meter test leads before use to be certain they are in good condition and use test leads with an insulating rating acceptable for the system voltage.

Example: Measuring Control Transformer Secondary Voltage

- Set meter selector switch on \tilde{V} (AC Volts) position.
- Plug in meter leads as shown: Black lead - Meter **COM** (Common), Red lead - Meter **V** (Volts).
- Apply probes to circuit test locations. Read AC Voltage on main display.

The TPI 183 is auto-ranging (selects appropriate decimal point) and will display the voltage to the greatest degree of accuracy possible.